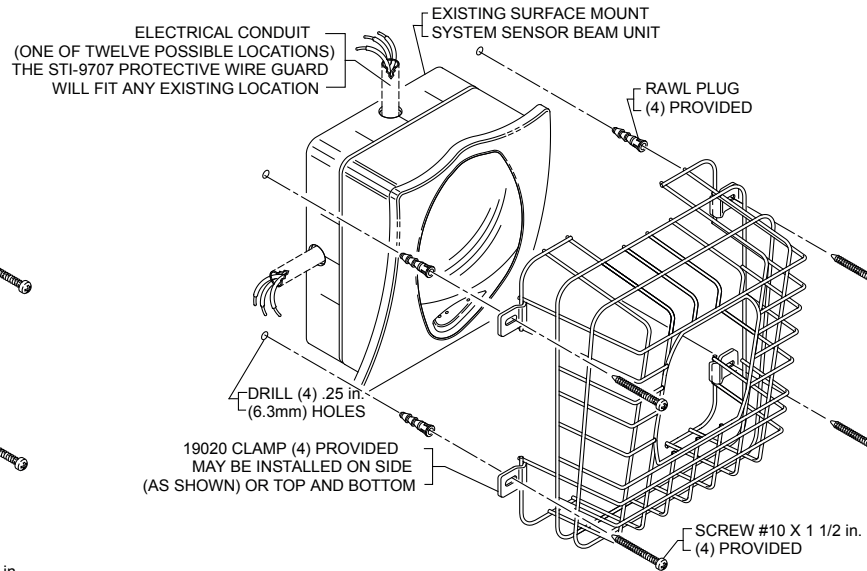
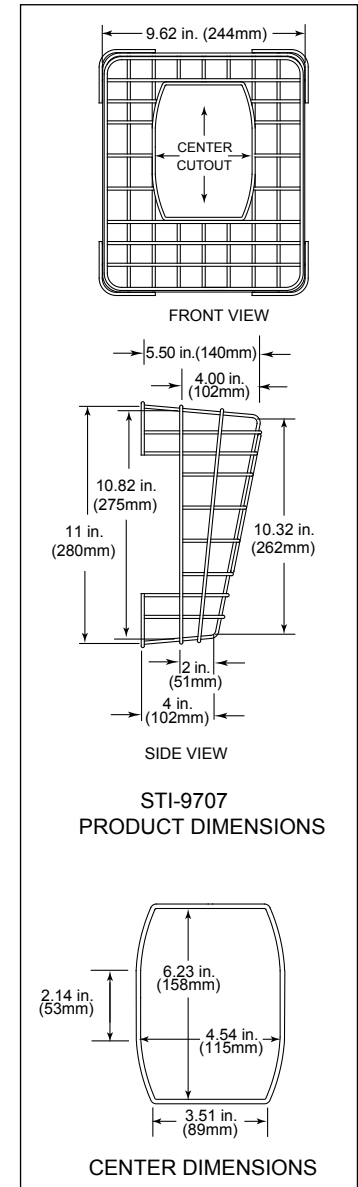


STI-9706



STI-9707



CENTER DIMENSIONS

**IMPORTANT**

Do not attempt to install reflective beam guard until both the transmitter and reflective mirror have been perfectly aligned and tested according to the System Sensor installation directions furnished with detector unit.

**INSTALLATION INSTRUCTIONS**

1. Center the wire guard over existing reflective beam housing making sure center cutout in wire guard is positioned over beam lens window.
2. Mark and drill (4) holes as shown in pictorial. The Beam Smoke Guard may be spray painted once prior to installation.

**SERVICE**

1. Periodic cleaning of Beam Smoke Guard is required to prevent buildup of dust and other matter.
2. To service the System Sensor unit, back off the (4) screws, rotate clamps and carefully remove wire guard. When reinstalling wire guard, care must be taken not to hit or bump the reflective beam housing or misalignment may occur.

Three year warranty or a one year limited warranty (from date of purchase) on most products. See website for details. Electronic warranty form at [www.sti-usa.com/wc14](http://www.sti-usa.com/wc14).

**INSTALLATION OF STI-9706/STI-9707 BEAM SMOKE GUARD**

All specifications and information shown were current as of publication and are subject to change without notice.

