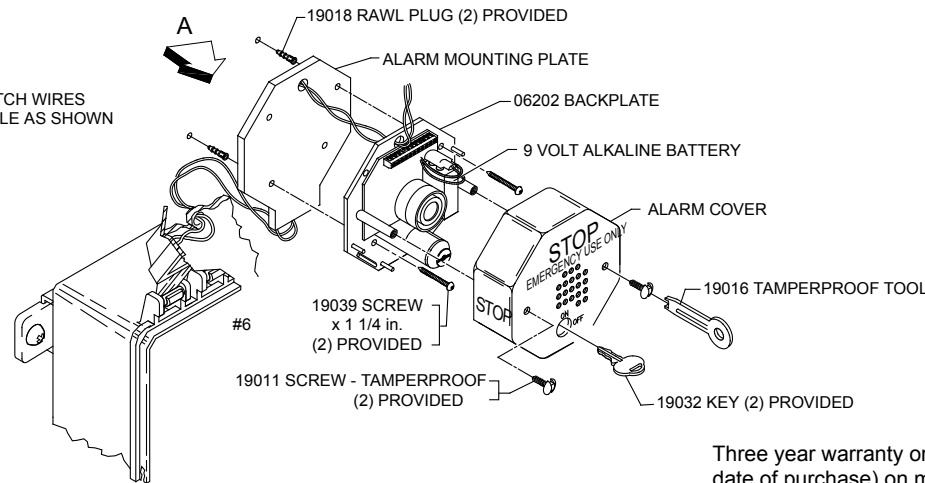
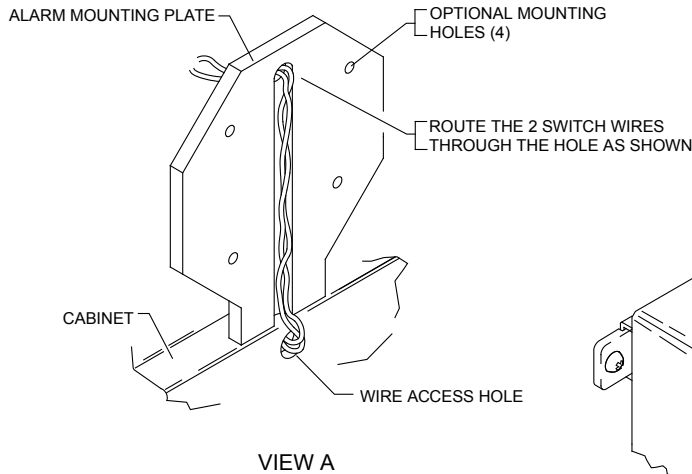
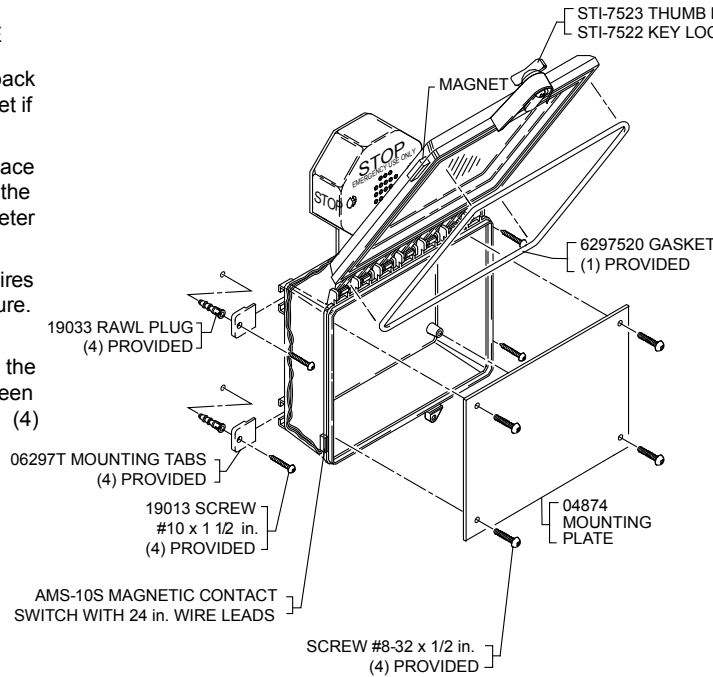




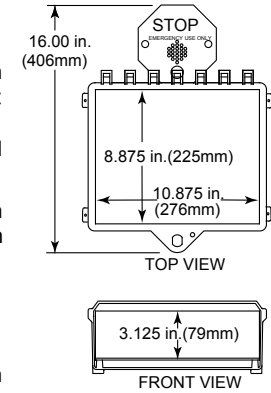
INSTALLATION OF STI-7523 ENCLOSURE

1. Insert the (4) mounting tabs fully into back box mounting tab slots. Use rubber mallet if necessary.
2. After selecting a suitable location, place enclosure, in closed position, against the wall. Mark and drill (4) 1/4 in. diameter holes. Insert the (4) 19033 rawl plugs.
3. Next fish the (2) magnetic switch wires through the access hole at top of enclosure. (see view A). Close and lock enclosure.
4. Place enclosure in position making sure the (2) switch wires are not pinched between the wall and enclosure. Drive in the (4) screws. Enclosure is now secure.

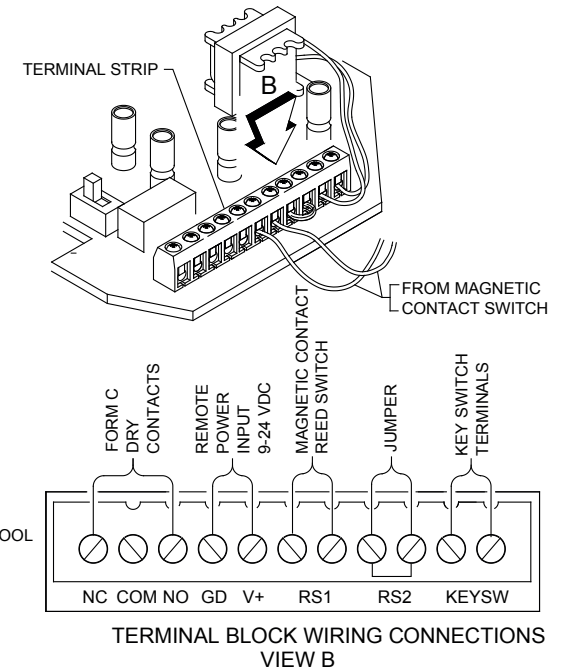


INSTALLATION OF ALARM SYSTEM

1. Place the alarm mounting plate on the top center of enclosure. Select at least two of the four optional mounting holes. Mark and drill 3/16 in. holes and install the 19018 rawl plugs.
2. Fish the magnetic switch wires through the alarm mounting plate and the siren backplate. Next, drive the two alarm mounting screws into the previous installed anchors.
3. Install the two magnetic switch wires following the terminal switch diagram (see View B).
4. Install the alarm cover using the two tamperproof screws and provided tool.



PRODUCT DIMENSIONS
STI-7523 THUMB LOCK
STI-7522 KEY LOCK AVAILABLE



Three year warranty or a one year limited warranty (from date of purchase) on most products. See website for details. Electronic warranty form at www.sti-usa.com/wc14.

INSTALLATION OF STI-7522 & STI-7523 PROTECTIVE CABINET

All specifications and information shown were current as of publication and are subject to change without notice.

