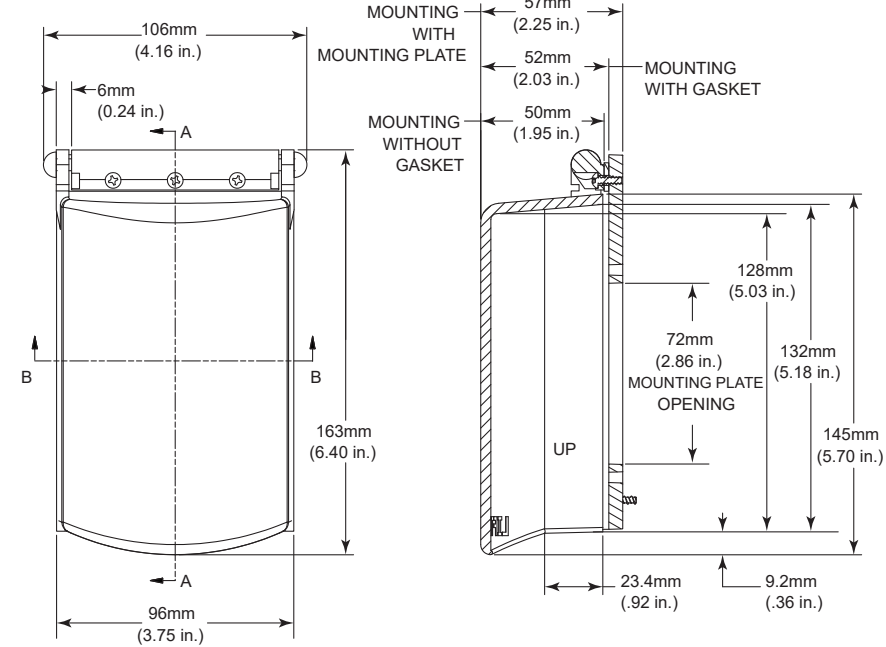
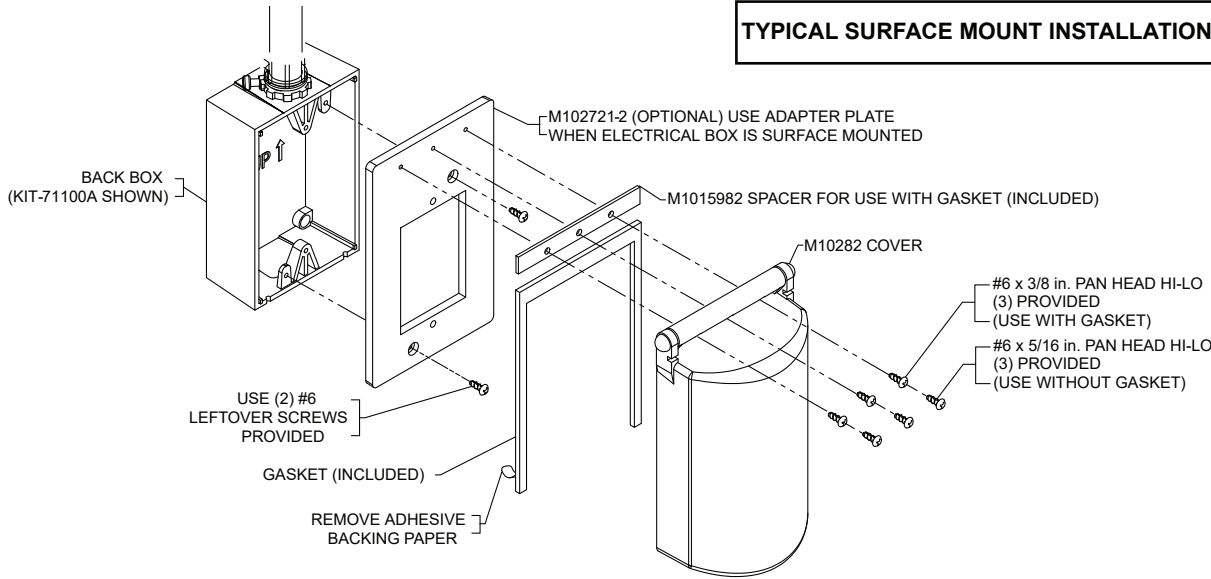
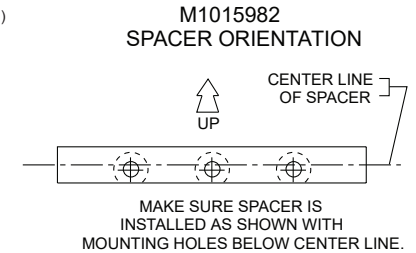
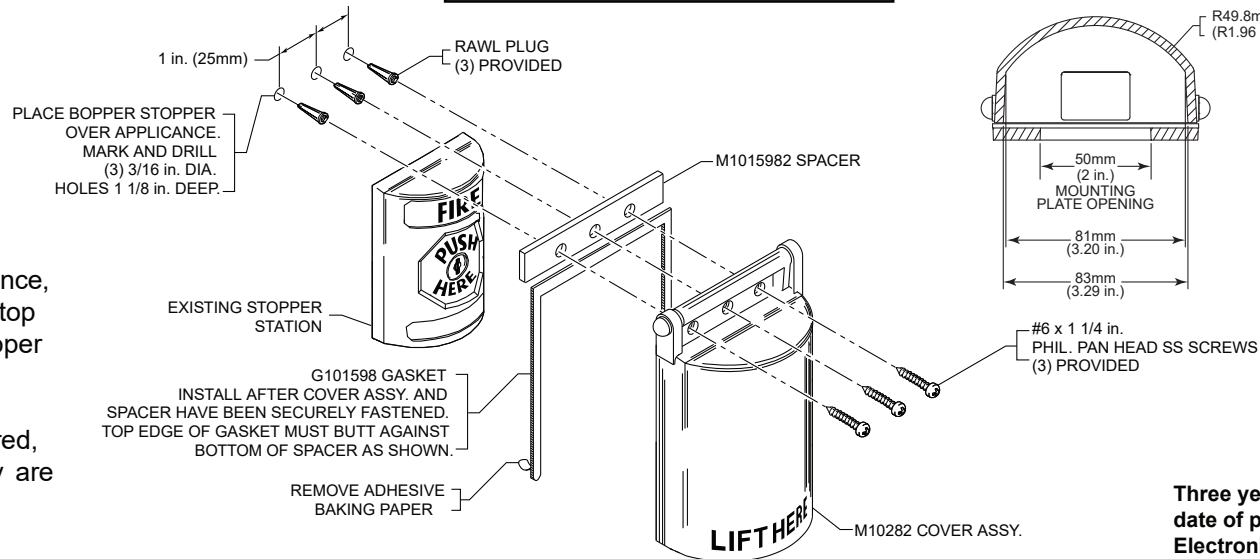




**TYPICAL SURFACE MOUNT INSTALLATION**



**TYPICAL FLUSH MOUNT INSTALLATION**



**NOTE**  
When installing cover, over appliance, leave 1/4 in. clearance between top surface and hinge to allow proper clearance when cover is lifted.

If weather protection is not required, discard gasket and spacer, they are not needed.

**Three year warranty or a one year limited warranty (from date of purchase) on most products. See website for details. Electronic warranty form at [www.sti-usa.com/wc14](http://www.sti-usa.com/wc14).**

**INSTALLATION OF STI-6518 BOPPER STOPPER®**

All specifications and information shown were current as of publication and are subject to change without notice.

6518IS FEB2020



ADA Compliant